



Headline Statistics

WCWSS DAM STORAGE
(%)

61.1

WEEKLY DAM LEVEL CHANGE
(%)

-2.10

AVERAGE TOTAL
DAILY WATER USE
(MLD)

1035

Water Resource Status

WATER RESOURCE STATUS	MEANING OF CURRENT STATUS
Early Drought Caution	<p>'Continued water wise use encouraged due to lower than anticipated dams level, cautioning possible start of a drought cycle'</p> <p>The main dams supplying the City are approximately 15% lower than last year - as shown on Page 3. While there is no immediate reason for concern and no expected restrictions for the next year, this updated drought risk status is part of the City's proactive approach to monitoring for and managing future droughts. This status and the corresponding actions are discussed in the Water Outlook 2023. The latest analysis has been incorporated into the dashboard update</p> <p>The Water Resource Status will be updated again in February 2026.</p>

Water Production from Different Sources

MAJOR DAMS
(MLD)

1026

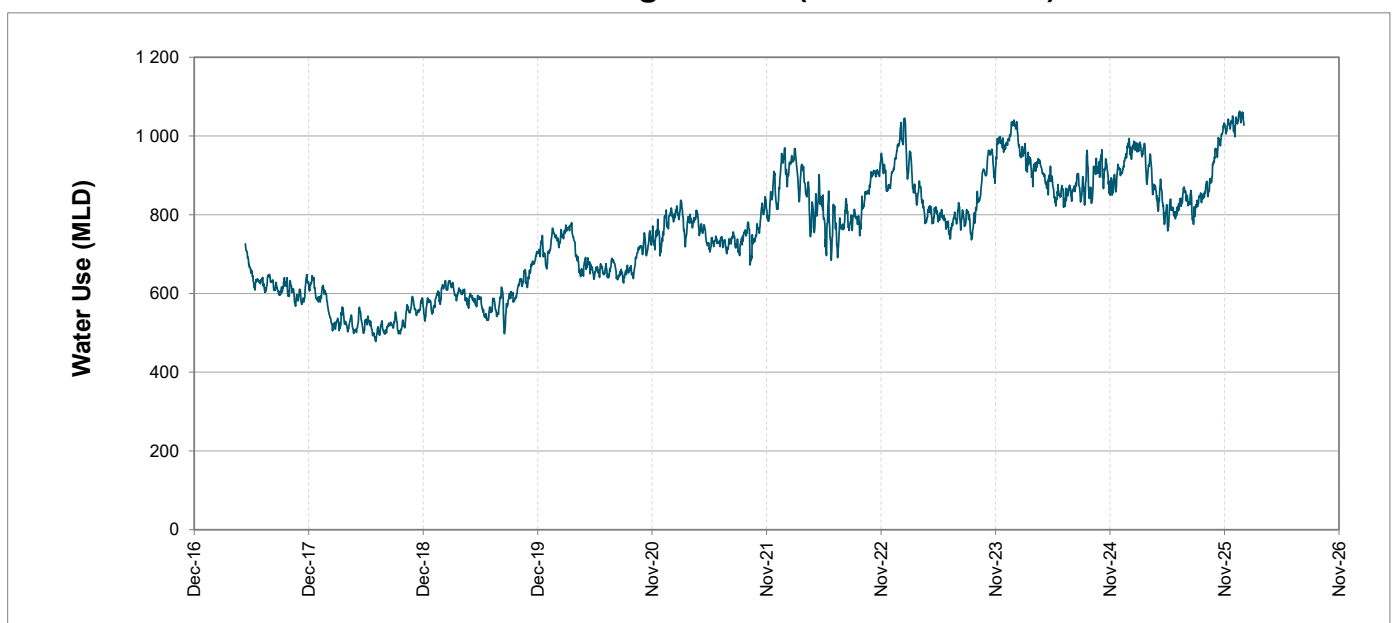
MINOR DAMS
(MLD)

4

GROUND WATER
AND SPRINGS
(MLD)

5

Overall Water Usage Trend (2010 - Present)



WCWSS means Western Cape Water Supply System

MLD means million litres per day

More information on Water Saving and Restrictions is available on the City of Cape Town's 'ThinkWater' website

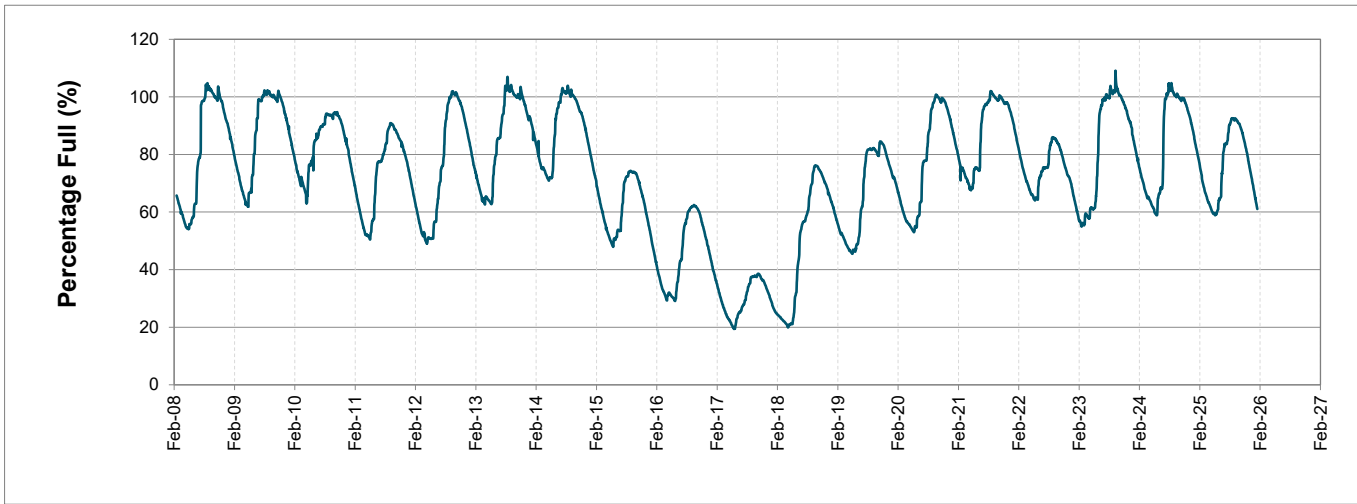
Water Stored in Major Dams (WCWSS)

Overall Percentage Full61.1%

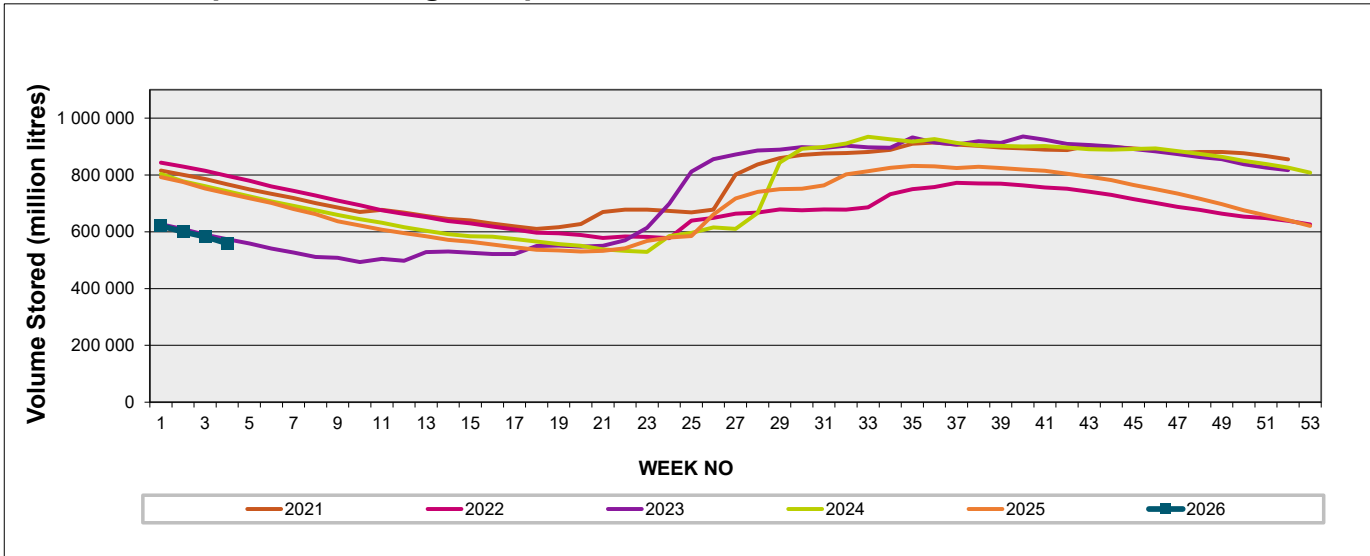
Weekly Change-2.1%

MAJOR DAMS (WCWSS)	STORAGE						
	CAPACITY	%	%	%	%	%	%
	MI	30 January 2026	Previous week	2025	2024	2023	2022
BERG RIVER	130 010	62.2	64.8	82.4	83.6	79.1	88.7
STEENBRAS LOWER	33 517	56.5	60.8	72.7	74.8	63.0	81.7
STEENBRAS UPPER	31 767	73.9	81.1	95.7	95.8	93.2	92.5
THEEWATERSKLOOF	480 188	56.3	58.0	81.1	78.9	58.3	88.9
VOËLVLEI	164 095	69.4	71.5	81.6	76.4	48.2	82.8
WEMMERSHOEK	58 644	69.8	70.6	75.3	91.8	75.4	78.0
TOTAL STORED	898 221	548 440	567 978	729 476	722 333	556 774	780 908
% STORAGE		61.1%	63.2%	81.2%	80.4%	62.0%	86.9%

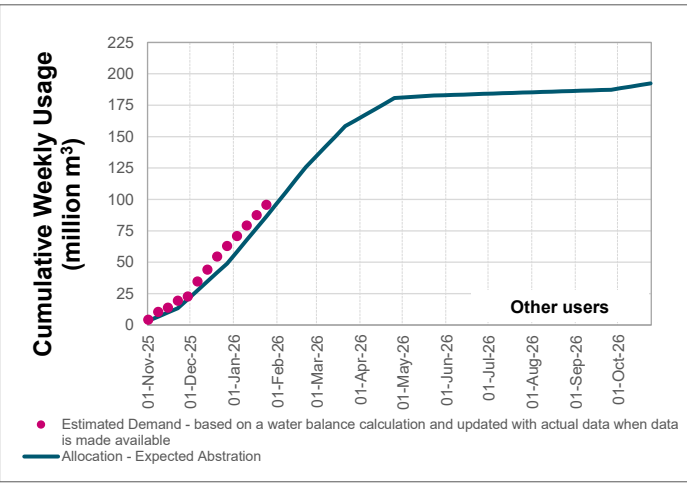
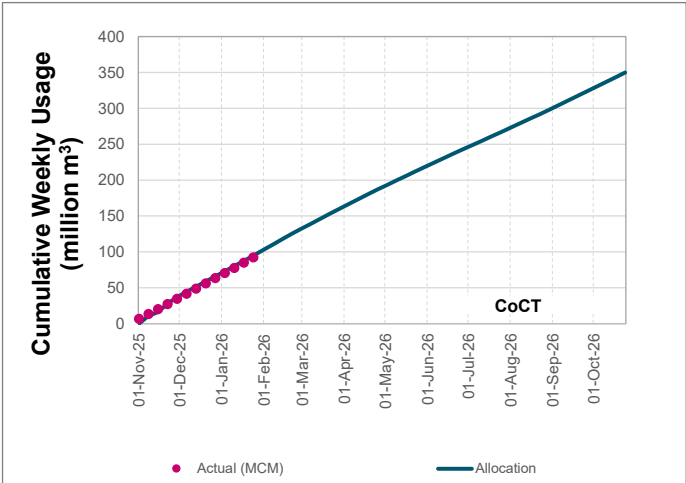
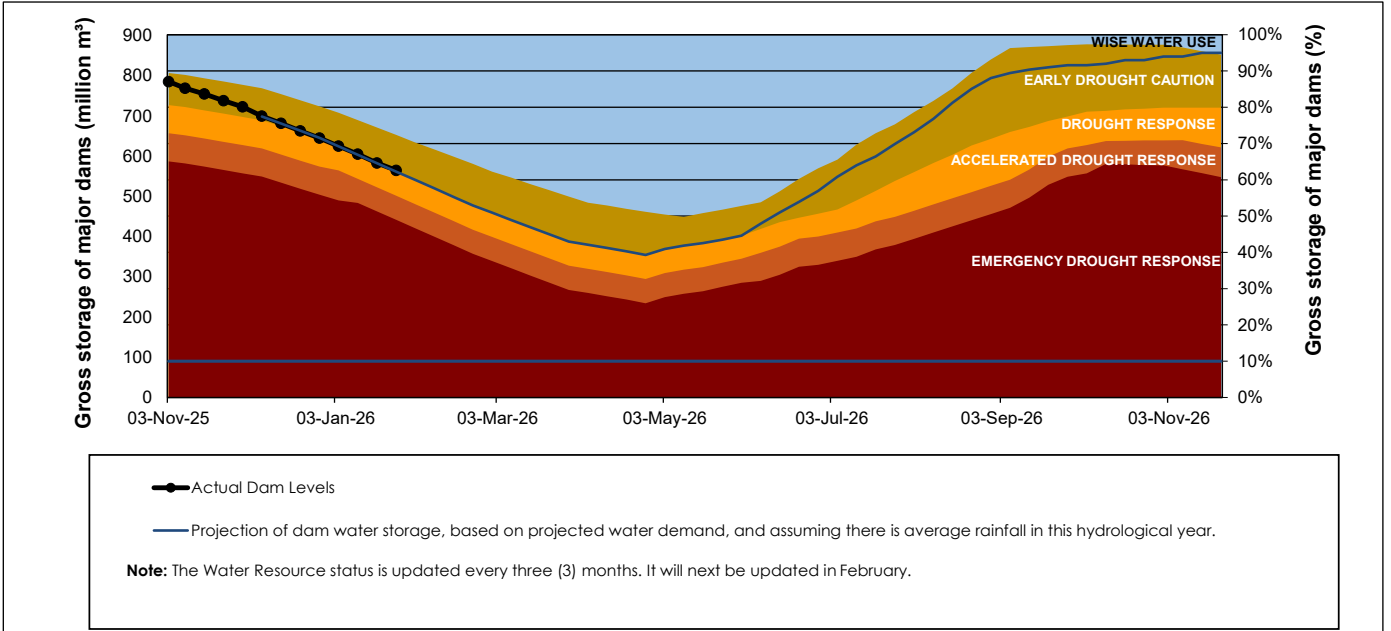
WCWSS Storage Record (2008 - Present)



WCWSS Comparative Storage Graph



Projected WCWSS Dam Storage Levels



Water Stored in Minor Dams

Overall Percentage Full	49.3	Weekly Change	-0.46
-------------------------	------	---------------	-------

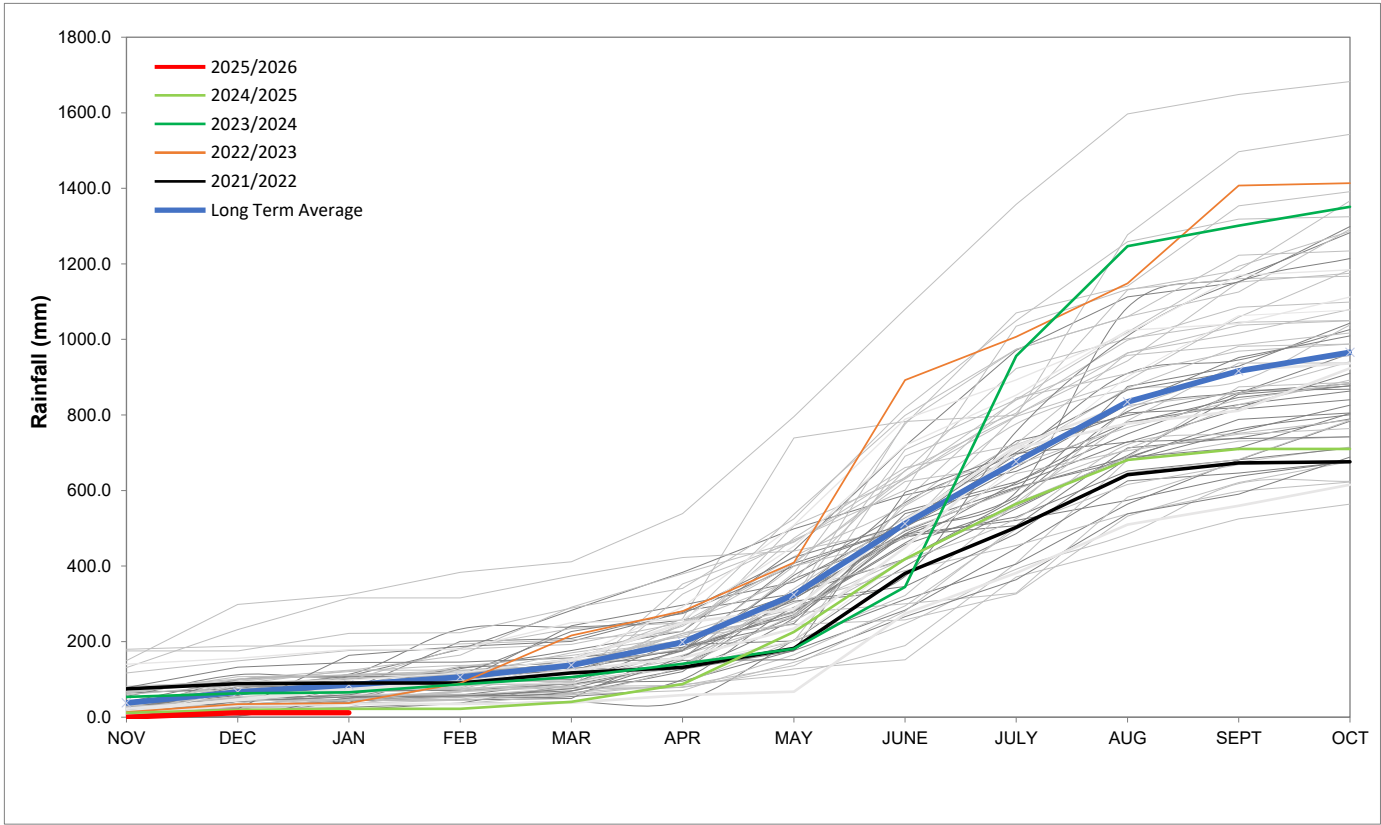
MINOR DAMS	STORAGE						
	CAPACITY	%	%	%	%	%	%
	MI	30 January 2026	Previous week	2025	2024	2023	2022
ALEXANDRA (Table Mountain)	126	32.8	35.0	41.8	44.8	47.3	72.6
DE VILLIERS (Table Mountain)	243	57.2	58.0	92.0	97.1	81.4	63.3
HELY-HUTCHINSON (Table Mount)	925	13.9	14.2	58.1	36.5	2.2	42.4
KLEINPLAATS (Simon's Town)	1 368	38.8	42.0	23.6	66.0	37.7	72.9
LAND-EN-ZEEZICHT (Helderberg)	451	82.7	83.0	87.3	75.3	86.4	90.0
LEWIS GAY (Simon's Town)	182	62.6	54.8	93.6	56.0	48.8	76.4
VICTORIA (Table Mountain)	128	43.5	47.7	90.4	77.6	80.6	57.5
WOODHEAD (Table Mountain)	954	82.6	80.2	42.7	57.8	78.8	53.7
Total Stored	4 377	2157.4	2177.5	2216.9	2593.5	2117.7	2730.8
Percentages stored		49.3	49.7	50.6	59.3	48.4	62.4

Rainfall Recorded

RAINFALL (mm)	23-Jan	24-Jan	25-Jan	26-Jan	27-Jan	28-Jan	29-Jan	Jan	
								Total*	LT Average
Blackheath Upper	0.0	0.0	0.0	0.0	0.0	0.0	0.0	2.0	15.3
Brooklands	0.0	0.0	0.0	0.0	0.0	0.0	0.0	4.0	27.7
Newlands	0.0	0.0	0.0	0.0	0.0	0.0	0.0	2.5	37.4
Steenbras	0.0	0.0	0.0	0.0	0.0	0.0	0.0	0.0	29.5
Table Mountain (Woodhead)	0.0	0.0	0.0	0.0	0.0	0.0	0.0	46.0	52.7
Theewaterskloof	0.0	0.0	0.0	0.0	0.0	0.0	0.0	16.1	24.9
Tygerberg	0.0	0.0	0.0	0.0	0.0	0.0	0.0	2.1	13.0
Voëlvlei	0.0	0.0	0.0	0.0	0.0	0.0	0.0	1.2	13.2
Wemmershoek	0.0	0.0	0.0	0.0	0.0	0.0	0.0	0.0	20.6
Wynberg	0.0	0.0	0.0	0.0	0.0	0.0	0.0	1.0	21.2
Notes: *Total/cummulative rainfall for month indicated above									
LT: Long Term									

Accumulated Monthly Rainfall at Wemmershoek

Note: Wemmershoek station used due to long record and mountainous location



Drinking Water Quality

SAMPLE PASS RATE		
Month	Water Quality Compliance (%)	Target (%)
Jan-22	99.04	98.00
Feb-22	99.04	98.00
Mar-22	98.99	98.00
Apr-22	98.96	98.00
May-22	98.90	98.00
Jun-22	98.96	98.00
Jul-22	99.46	98.50
Aug-22	99.47	98.50
Sept-22	99.46	99.00
Oct-22	99.47	99.00
Nov-22	99.45	99.00
Dec-22	99.36	99.00
Jan-23	99.36	99.00
Feb-23	99.35	99.00
Mar-23	99.29	99.00
Apr-23	99.24	99.00
May-23	99.24	99.00
Jun-23	99.18	99.00
Jul-23	99.19	99.00
Aug-23	99.14	99.00
Sept-23	99.10	99.00
Oct-23	99.10	99.00
Nov-23	99.04	99.00
Dec-23	99.15	99.00
Jan-24	99.16	99.00
Feb-24	99.12	99.00
Mar-24	99.16	99.00
Apr-24	99.20	99.00
May-24	99.21	99.00
Jun-24	99.26	99.00
Jul-24	99.27	99.00
Aug-24	99.31	99.00
Sept-24	99.33	99.00
Oct-24	99.37	99.00
Nov-24	99.42	99.00
Dec-24	99.42	99.00
Jan-25	99.48	99.00
Feb-25	99.57	99.00
Mar-25	99.61	99.00
Apr-25	99.65	99.00
May-25	99.66	99.00
Jun-25	99.62	99.00
Jul-25	99.69	99.00
Aug-25	99.69	99.00
Sept-25	99.70	99.00
Oct-25	99.70	99.00
Nov-25	99.72	99.00
Dec-25	99.72	99.00

This table shows CCT drinking water quality compliance according to the South African National Standard 241:2015. Compliance, measured against all prescribed chemical and microbiological components, consistently exceeds the very high CCT target of 99%. (Overall compliance percentages of continuous sampling and analysis are released on a monthly basis.